

Paper Reference(s) 1BI0/1F  
Pearson Edexcel Level 1/Level 2 GCSE (9–1)

Biology  
PAPER 1  
Foundation tier

Diagram Booklet

In the boxes below, write your name, centre number and candidate number.

Surname					
Other names					
Centre Number					
Candidate Number					

## INSTRUCTIONS

There may be spare copies of some diagrams in case you need them.

**THIS DIAGRAM BOOKLET MUST BE RETURNED WITH THE QUESTION PAPER AT THE END OF THE EXAMINATION.**

## **Contents**

### **Page**

<b>4</b>	<b>Question 1(b)</b>
<b>5</b>	<b>Question 1(b) (Spare copy)</b>
<b>6</b>	<b>Question 1(c)</b>
<b>7</b>	<b>Question 1(c) (Spare copy)</b>
<b>8</b>	<b>Question 2(a)</b>
<b>9</b>	<b>Question 3(b)</b>
<b>10</b>	<b>Question 3(c)</b>
<b>11</b>	<b>Question 4(b)</b>
<b>12</b>	<b>Question 4(c)</b>
<b>13</b>	<b>Question 5(a)</b>
<b>14</b>	<b>Question 5(b)</b>
<b>15</b>	<b>Question 5(d)</b>
<b>16</b>	<b>Question 6(a)</b>
<b>17</b>	<b>Question 6(b)(i)</b>
<b>18</b>	<b>Question 6(b)(ii)</b>
<b>19</b>	<b>Question 6(b)(ii) (Spare copy)</b>
<b>20</b>	<b>Question 7</b>
<b>21</b>	<b>Question 7(b)(ii)</b>
<b>22</b>	<b>Question 8(b)</b>
<b>23</b>	<b>Question 8(b) (Spare copy)</b>
<b>24</b>	<b>Question 9(a)</b>
<b>25</b>	<b>Question 10(a)</b>
<b>26</b>	<b>Question 10(b)(ii)</b>

## Question 1(b)

disease

main way the  
disease is spread

cholera

• in the air

• by animal vectors

• in body fluids

malaria

• by a vaccination

• in water

## Question 1(b)

disease

main way the  
disease is spread

cholera

• in the air

• by animal vectors

• in body fluids

malaria

• by a vaccination

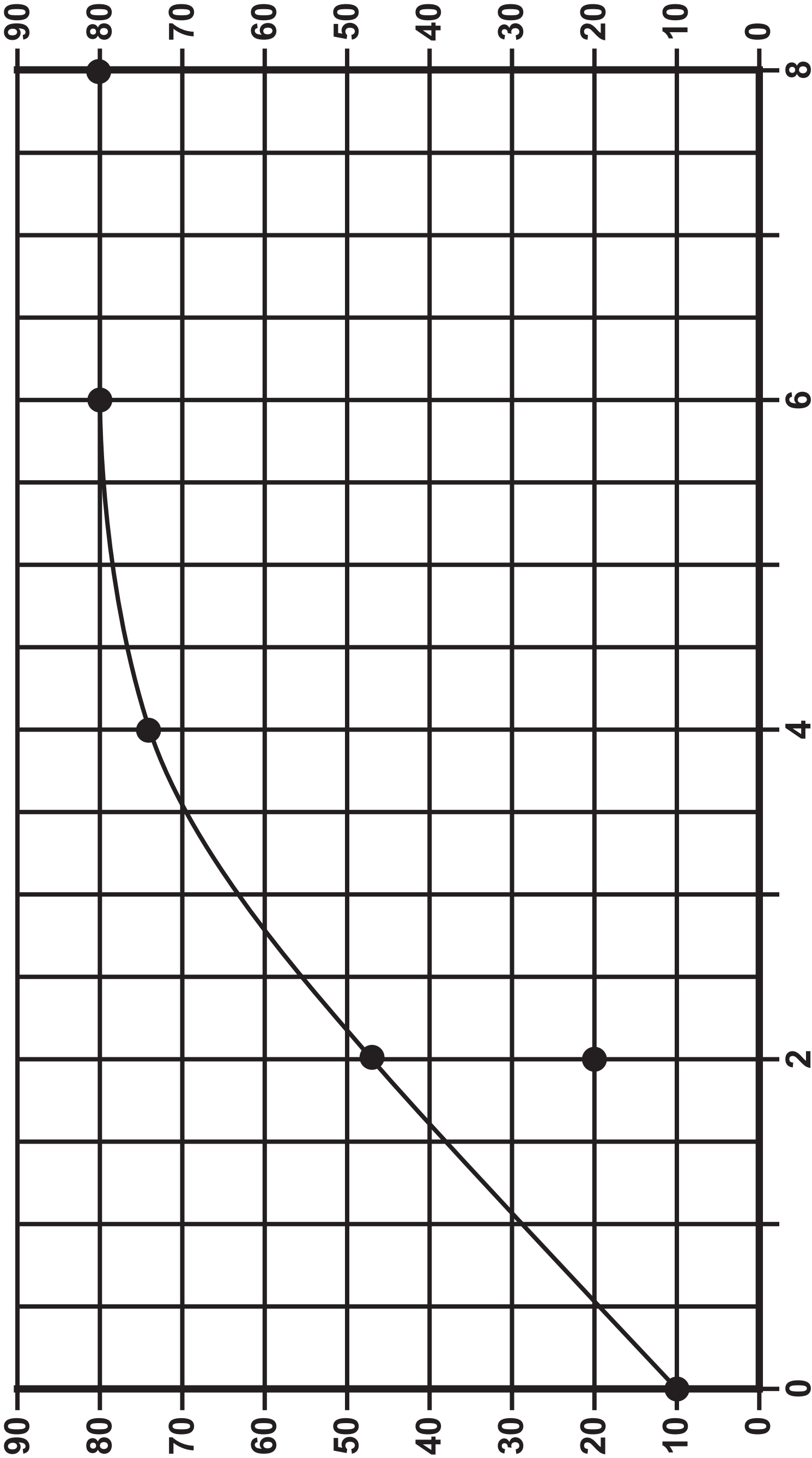
• in water

Question 1(c)

FIGURE 2

Key: —●— results at 20 °C

Number of bacteria in thousands

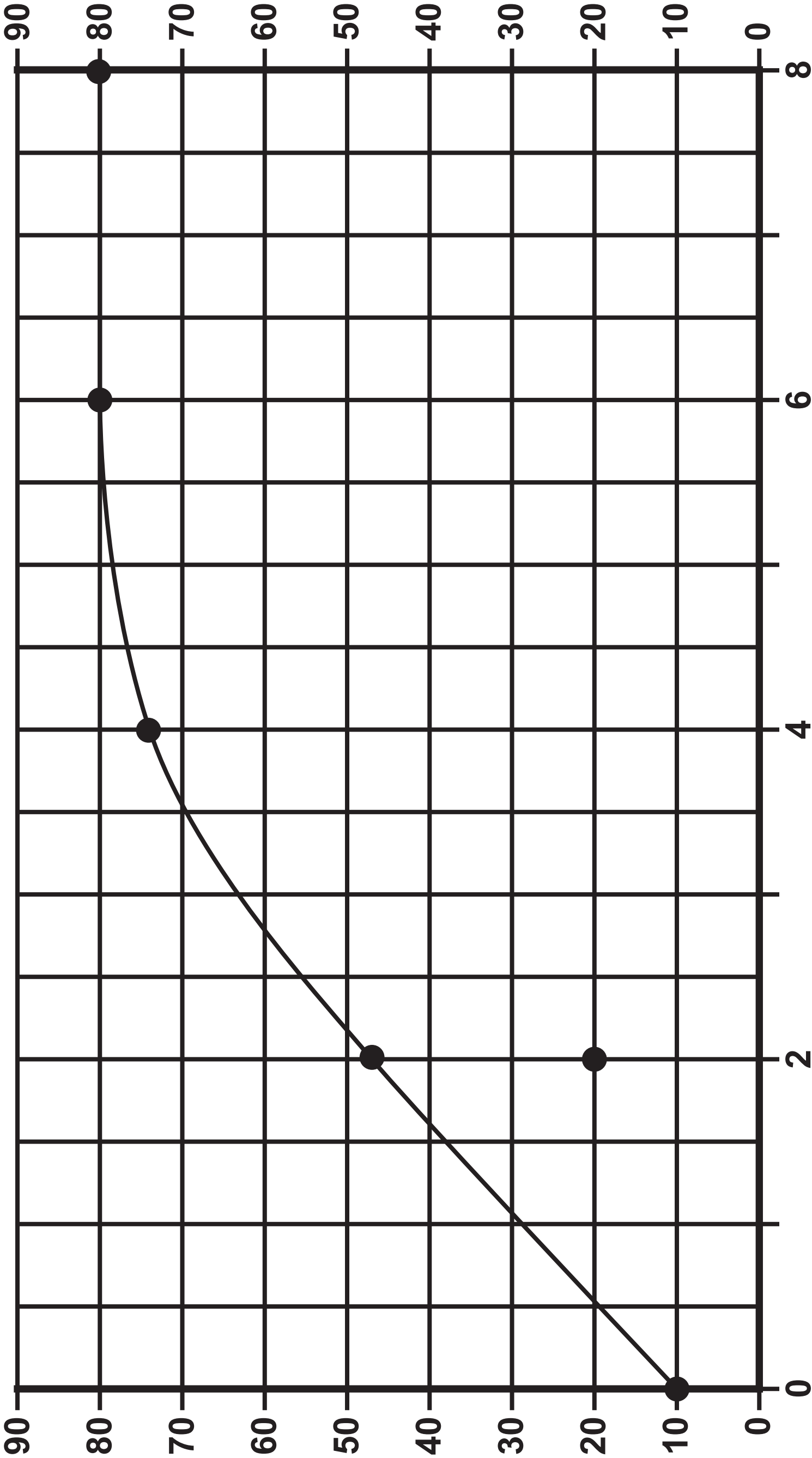


Time in hours

FIGURE 2

Key: —●— results at 20 °C

Number of bacteria in thousands



Time in hours

## Question 2(a)

FIGURE 3

Tool P

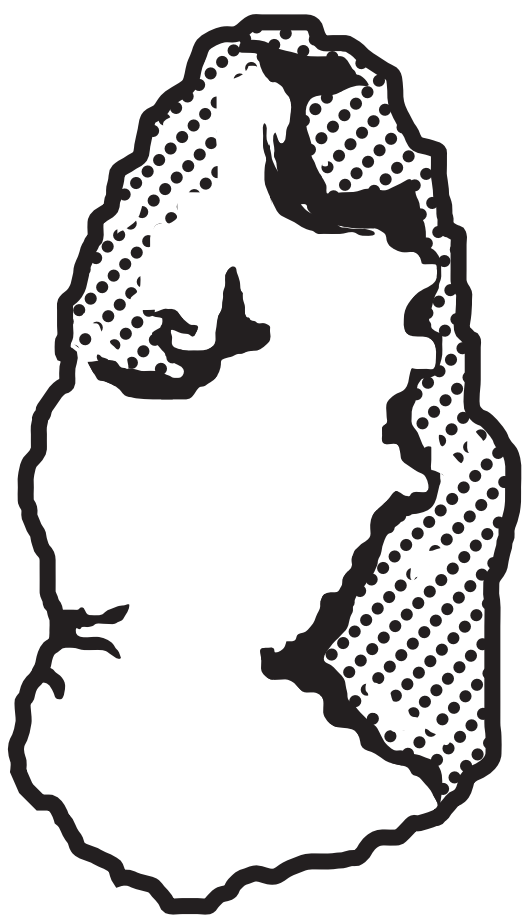
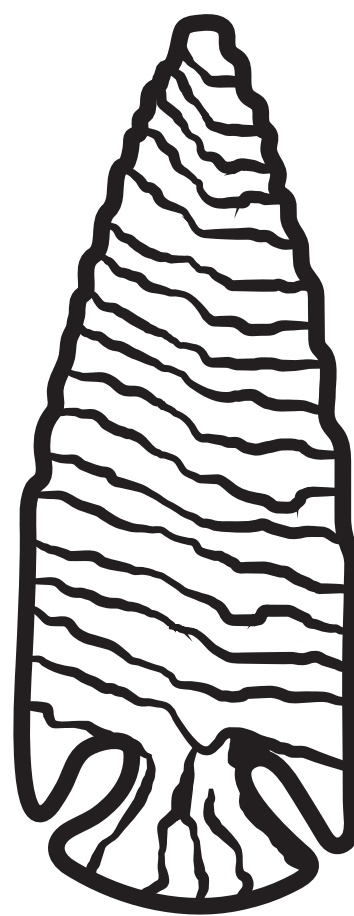


FIGURE 4

Tool Q





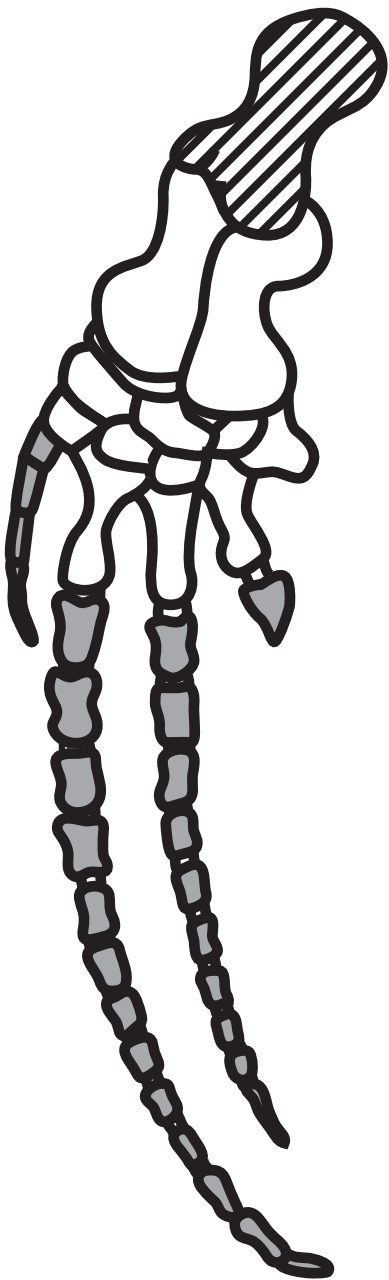
## Question 3(b)

FIGURE 5

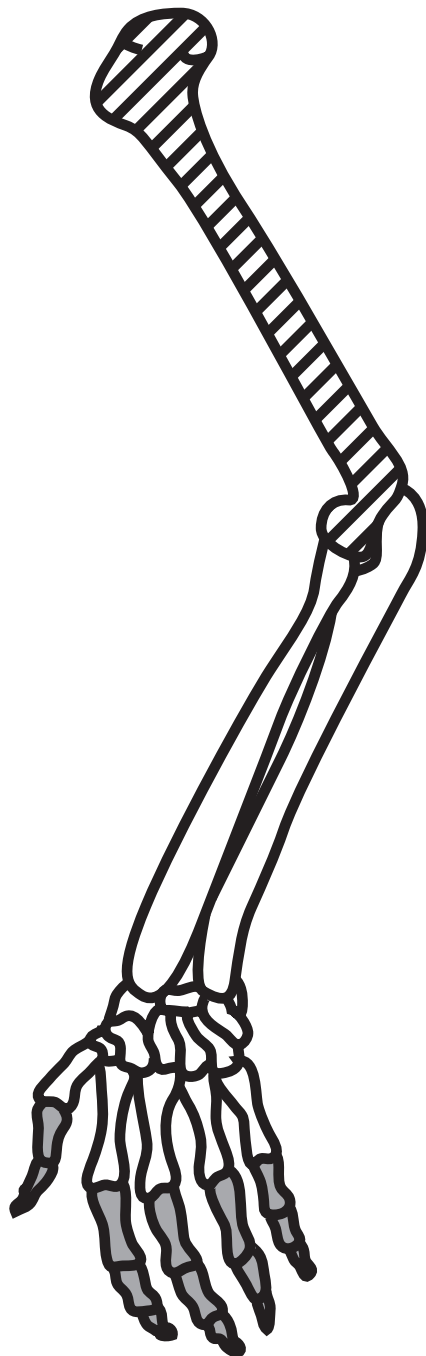
## Key

 humerus phalanges

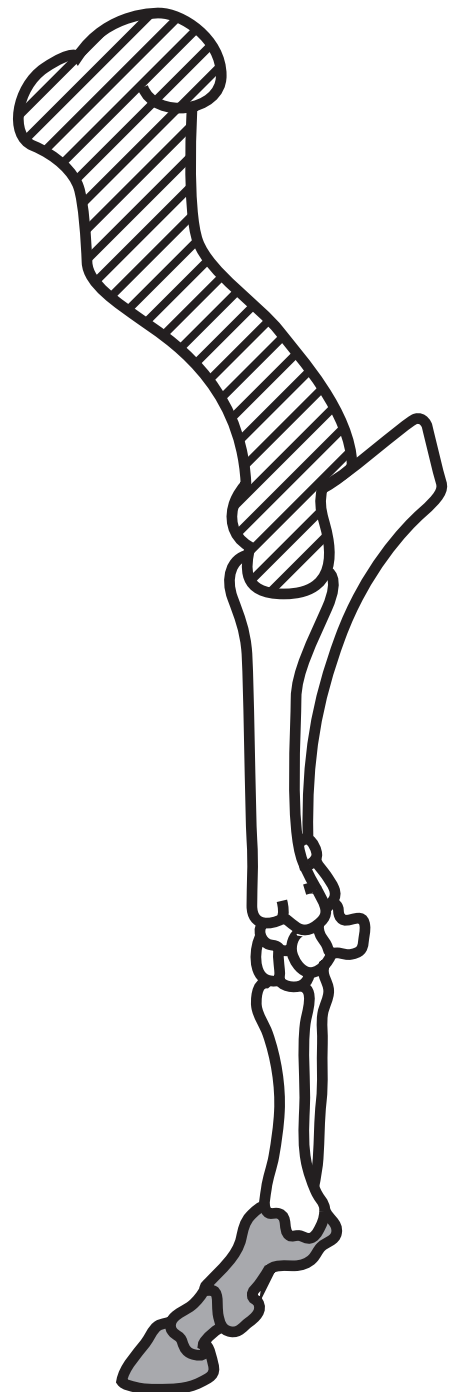
whale



human



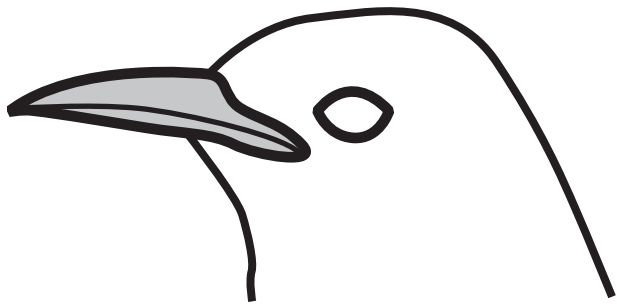
horse



## Question 3(c)

FIGURE 6

Species A



Species B

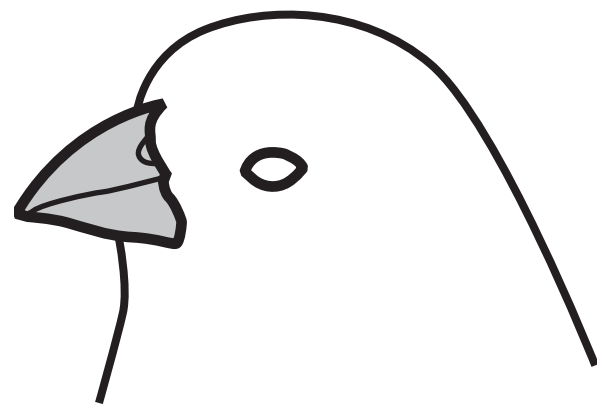
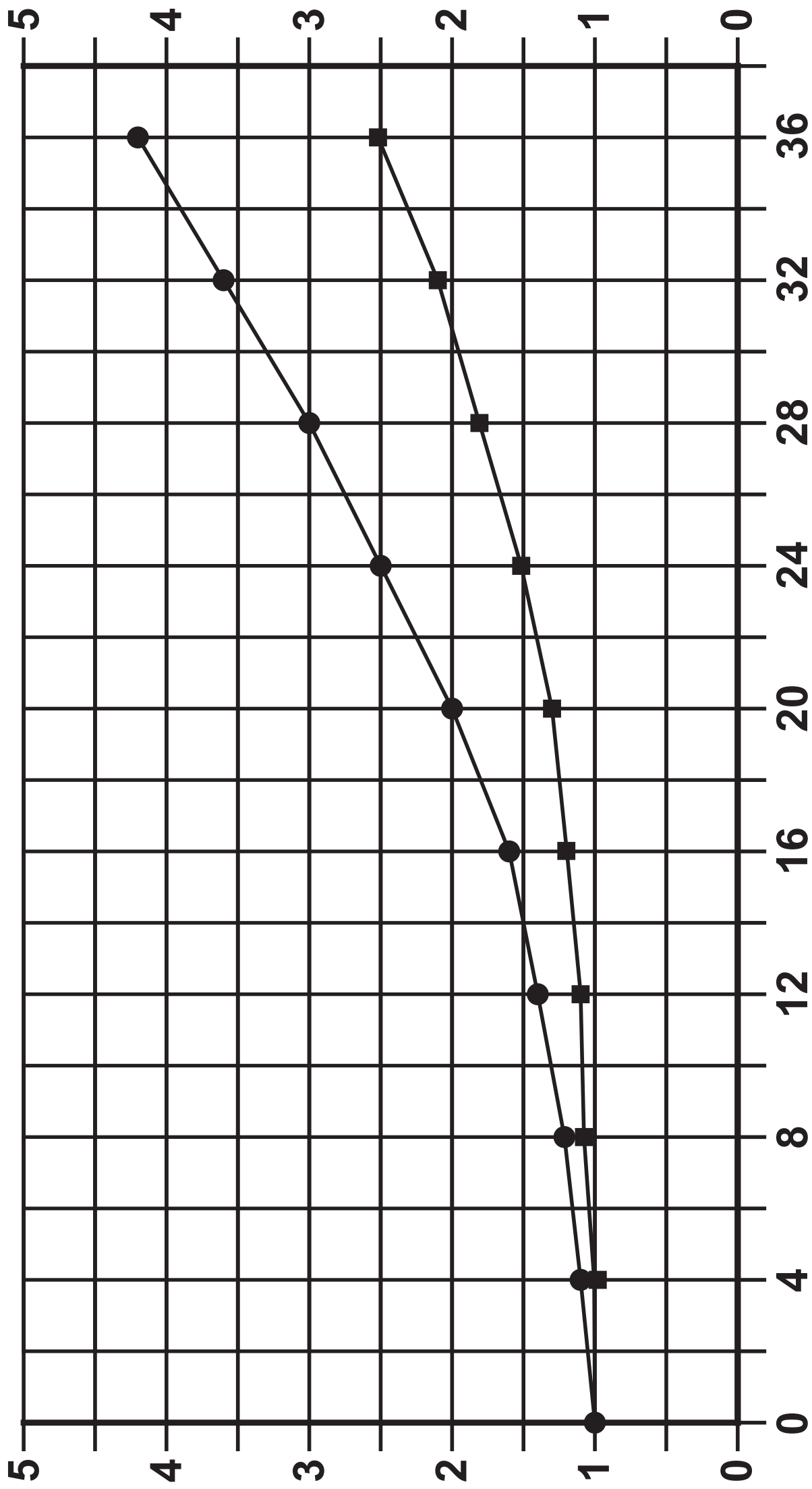


FIGURE 7

- Key
- drinks alcohol on its own
  - drinks alcohol with meals

Relative risk of developing  
cirrhosis of the liver



Number of units of alcohol consumed per week

## Question 4(c)

FIGURE 8

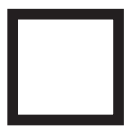
## Key



female without cystic fibrosis



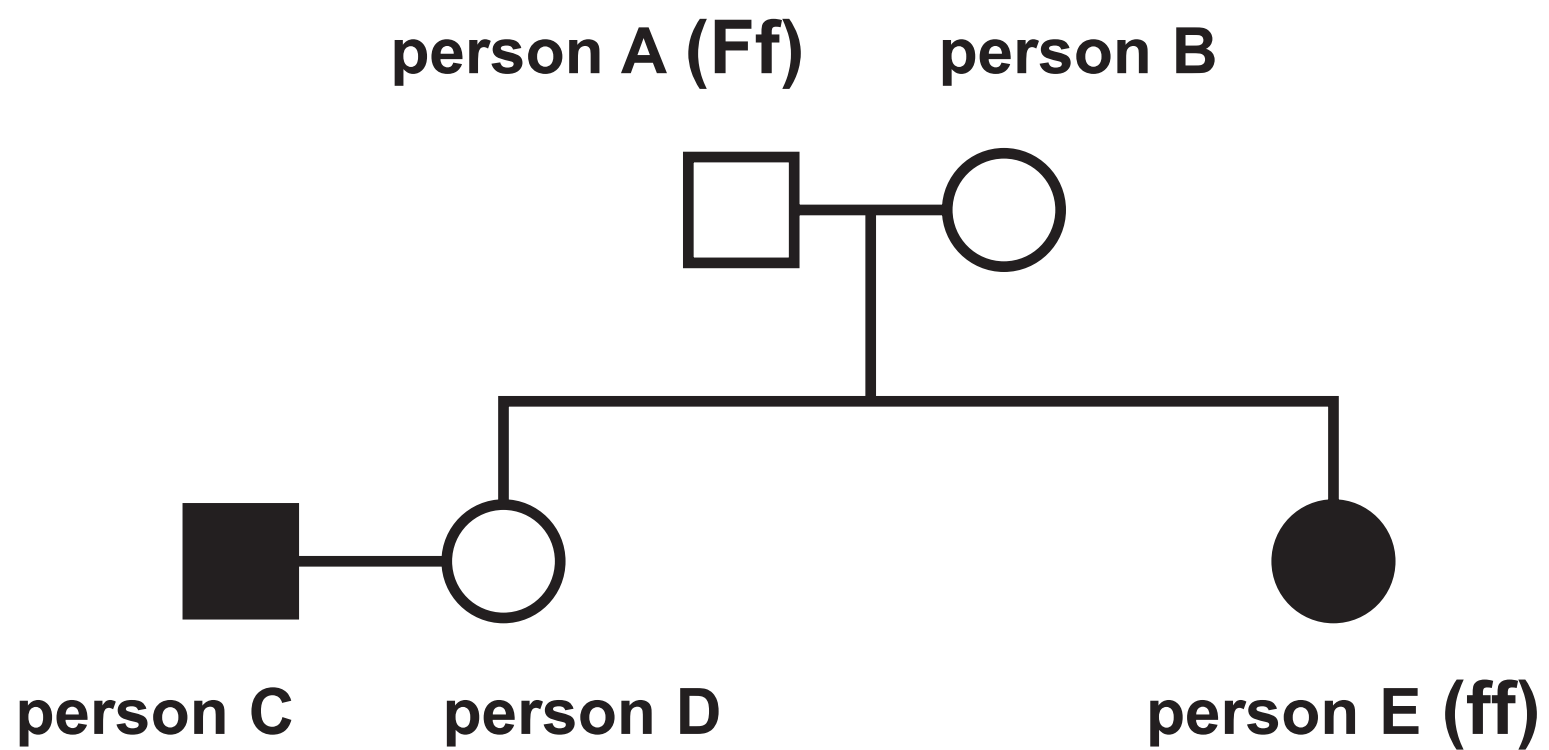
female with cystic fibrosis



male without cystic fibrosis



male with cystic fibrosis



## Question 5(a)

FIGURE 9



Question 5(b)

FIGURE 10

Temperature in °C	Number of plantlets produced
5	0
10	0
15	2
20	12
25	8
30	0

Question 5(d)

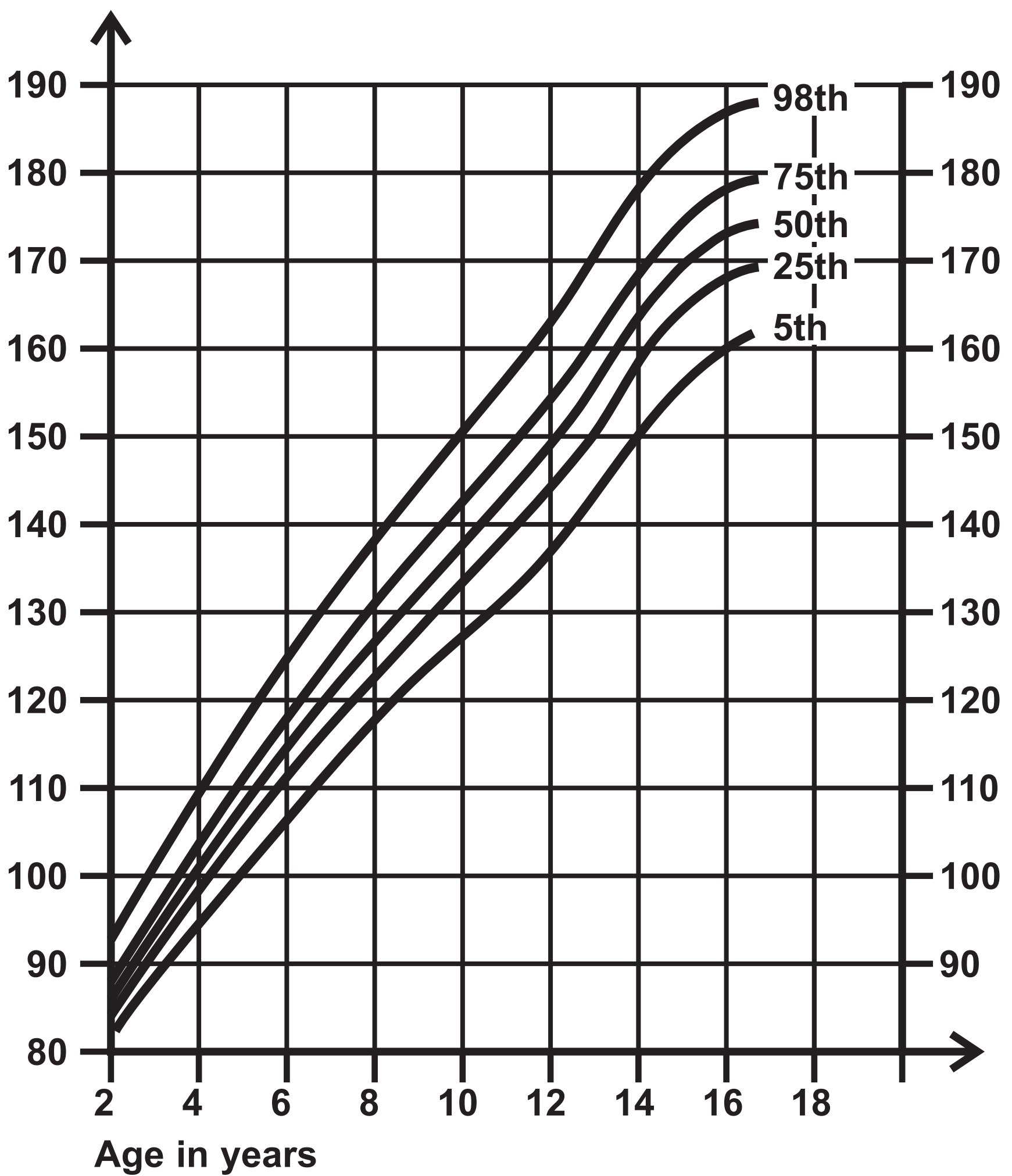
FIGURE 11

characteristic	plant K	plant L	plant M
size of leaves	small	large	small
striped leaves	none	none	green and white
flowers	small white	large white	large pink

## Question 6(a)

FIGURE 12

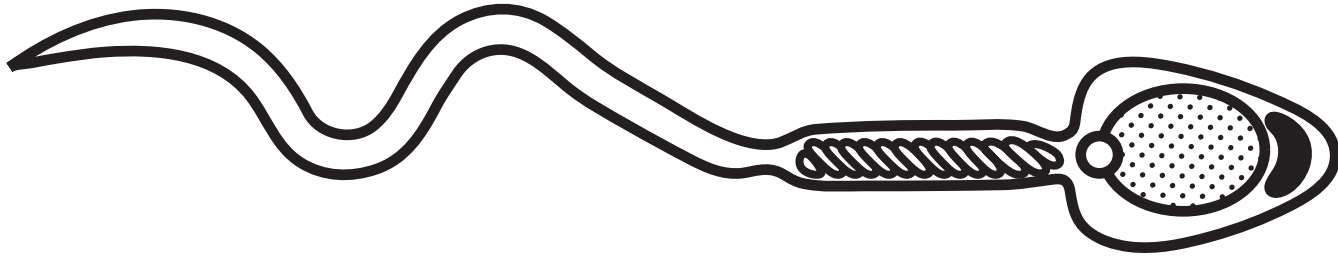
Height in cm





## Question 6(b)(i)

FIGURE 13



Question 6(b)(ii)

TABLE 1

	mitosis	meiosis
number of daughter cells produced		
number of chromosomes in each daughter cell		

Question 6(b)(ii)

TABLE 1

	mitosis	meiosis
number of daughter cells produced		
number of chromosomes in each daughter cell		

## Question 7

FIGURE 14

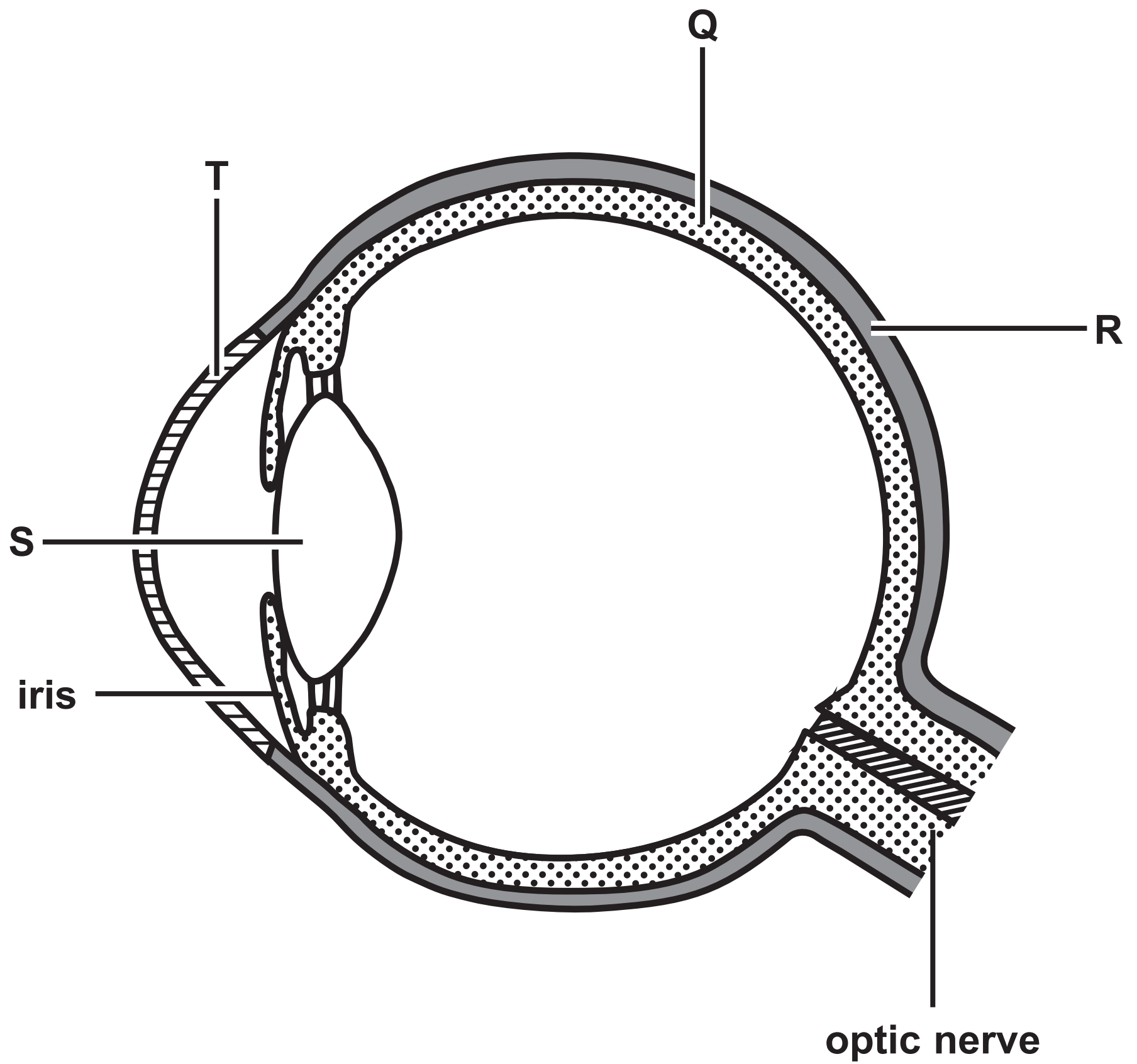
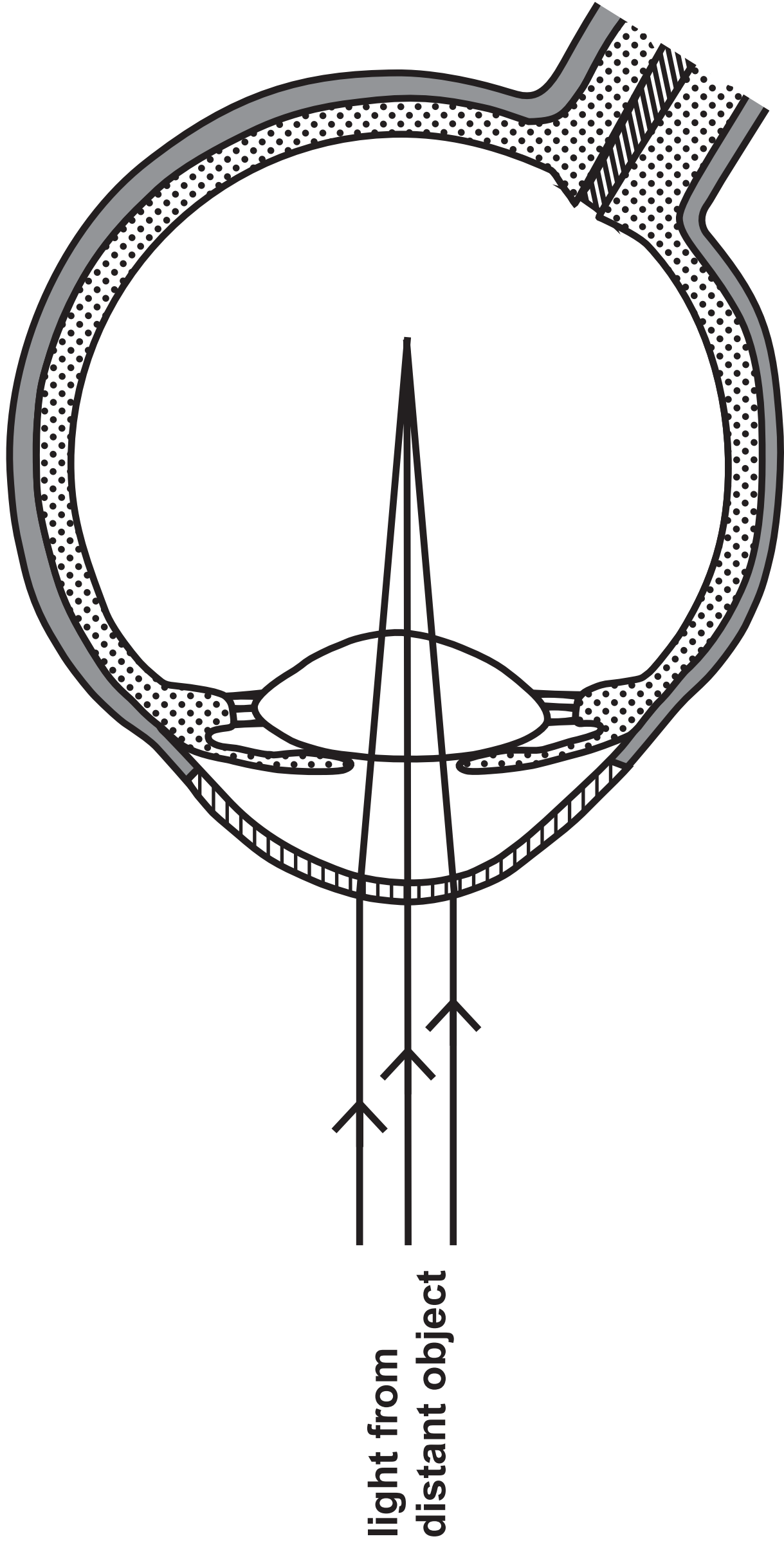


FIGURE 15



### Question 8(b)

## FIGURE 16

T	T	G	A	T	T	G	C	G	T	A	A
---	---	---	---	---	---	---	---	---	---	---	---

[illegible]

### Question 8(b)

## FIGURE 16

T	T	G	A	T	T	G	C	G	T	A	A
---	---	---	---	---	---	---	---	---	---	---	---

[illegible]

## Question 9(a)

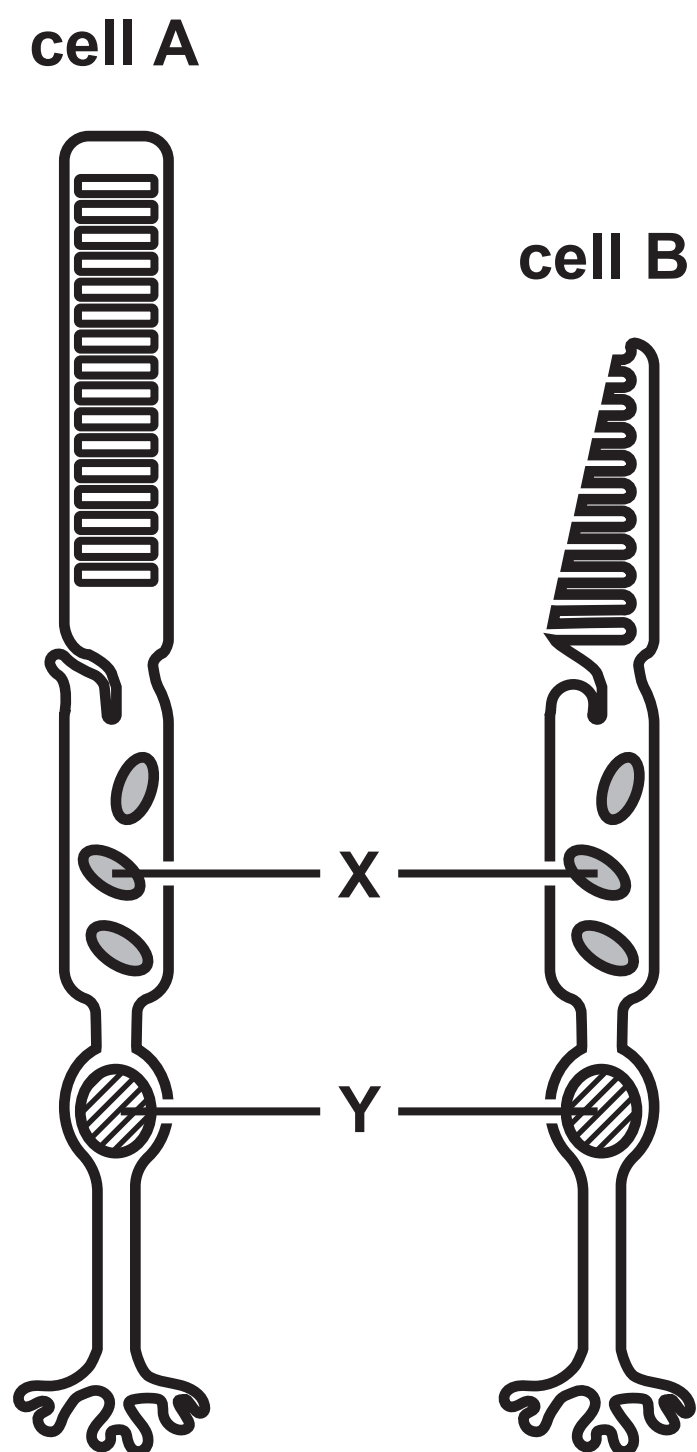
FIGURE 17

<b>sexually transmitted infection (STI)</b>	<b>number of people diagnosed per 1000 of the population</b>
<b>chlamydia</b>	<b>3·7</b>
<b>gonorrhoea</b>	<b>0·8</b>
<b>genital herpes</b>	<b>0·6</b>
<b>genital warts</b>	<b>1·1</b>
<b>syphilis</b>	<b>0·1</b>



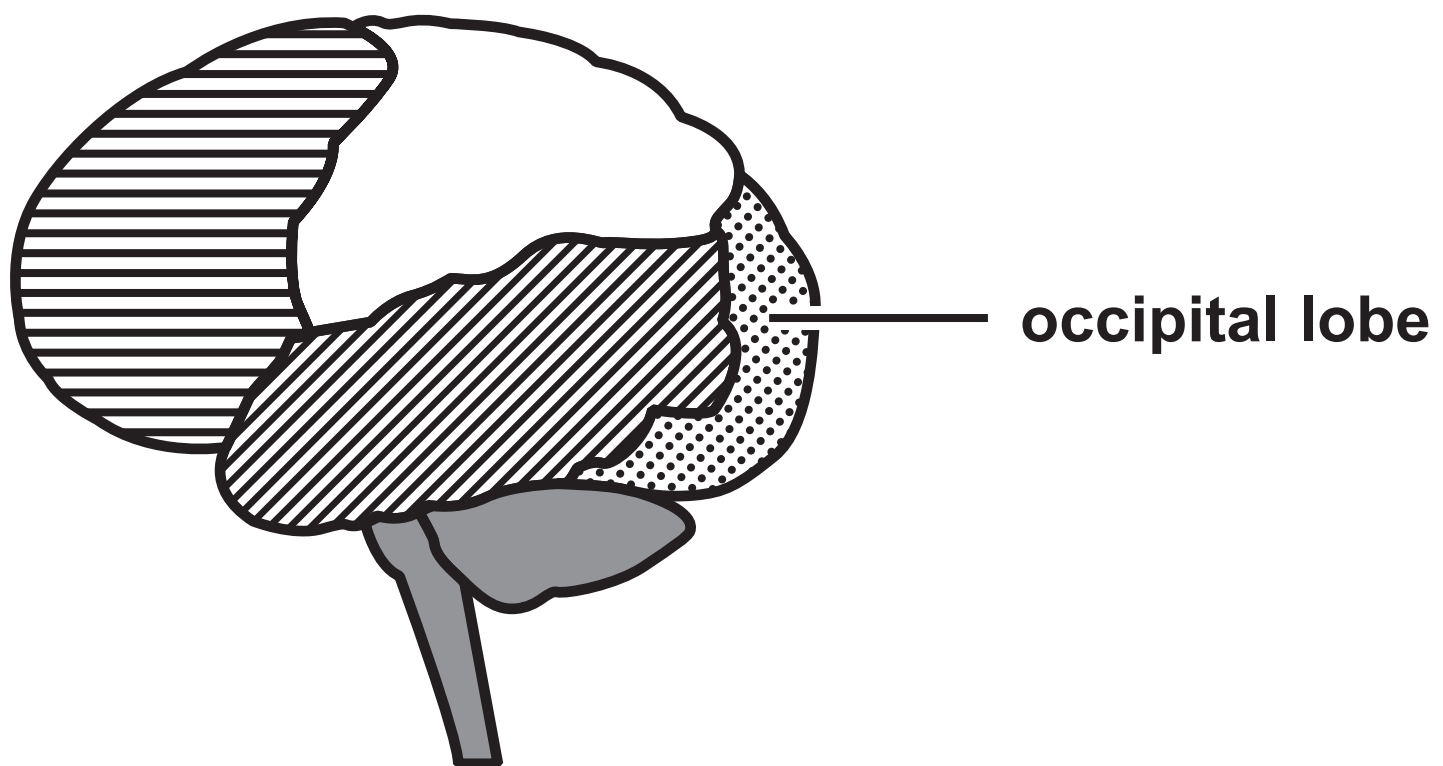
## Question 10(a)

FIGURE 18



## Question 10(b)(ii)

FIGURE 19



**Question 3(c)**

**(Source: © Kristel Segeren/Shutterstock)**

**(Source: © Maurizio De Mattei/Shutterstock)**

**Question 10(a)**

**(Source: © Kokhanchikov/Shutterstock)**

**Question 10(b)(ii)**

**(Source: © Magic mine/Shutterstock)**